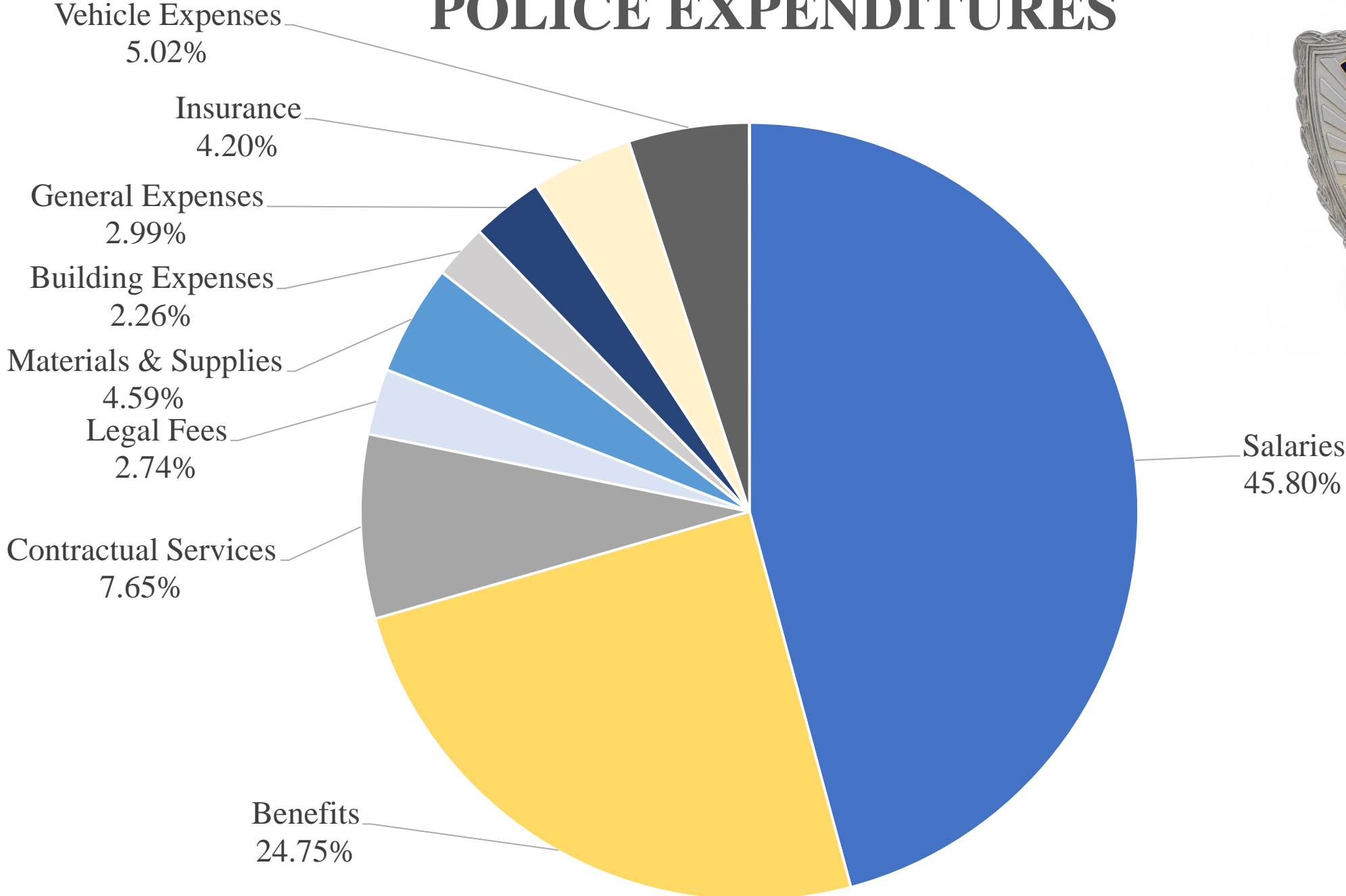
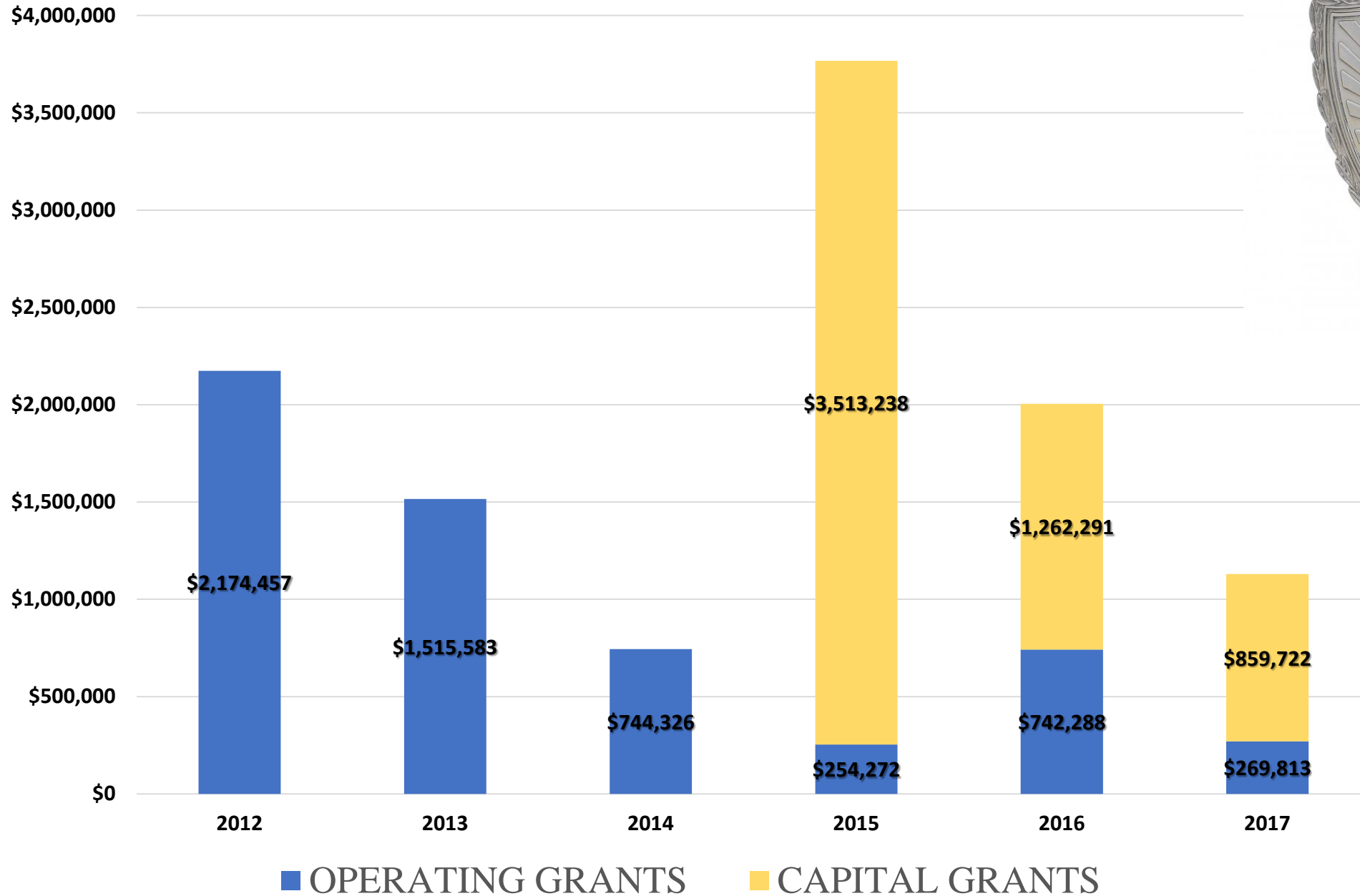


POLICE EXPENDITURES

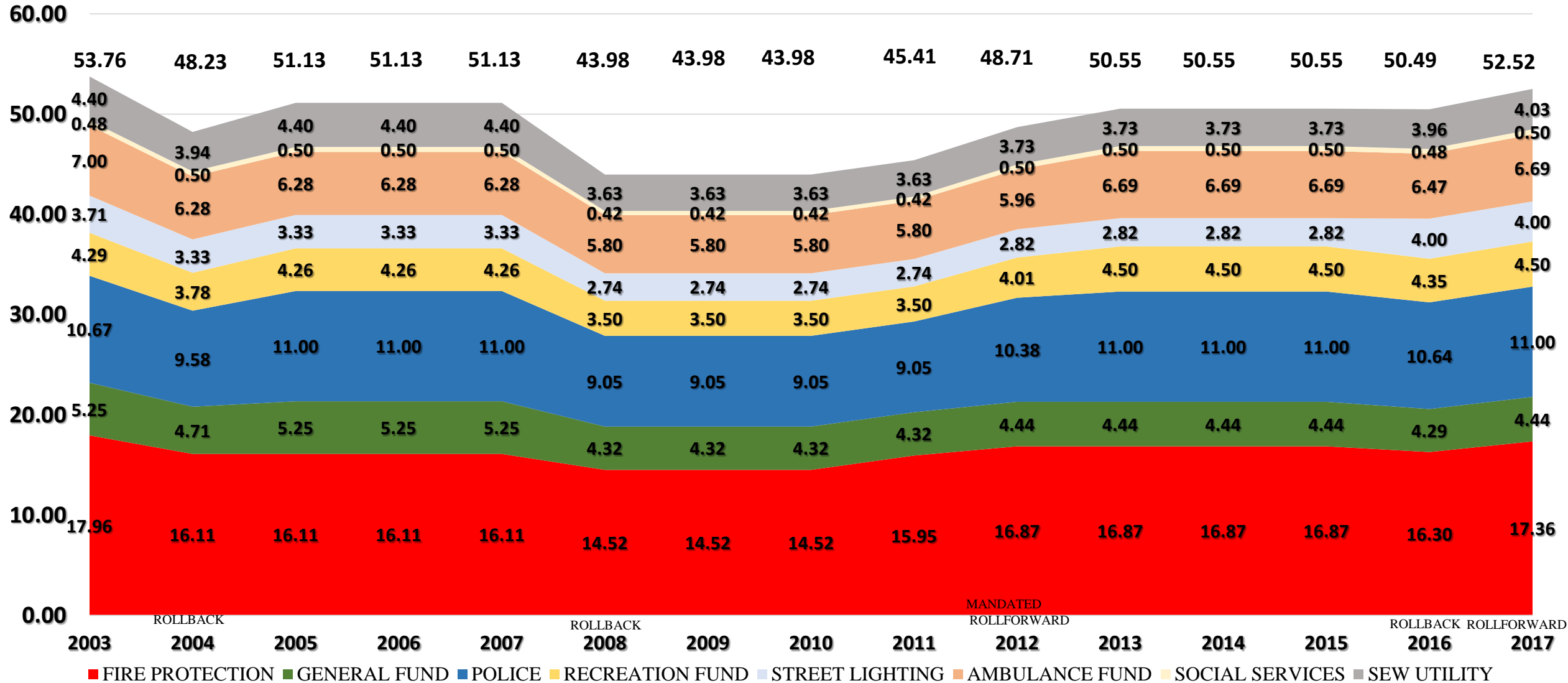


FEDERAL AND STATE GRANT REVENUE

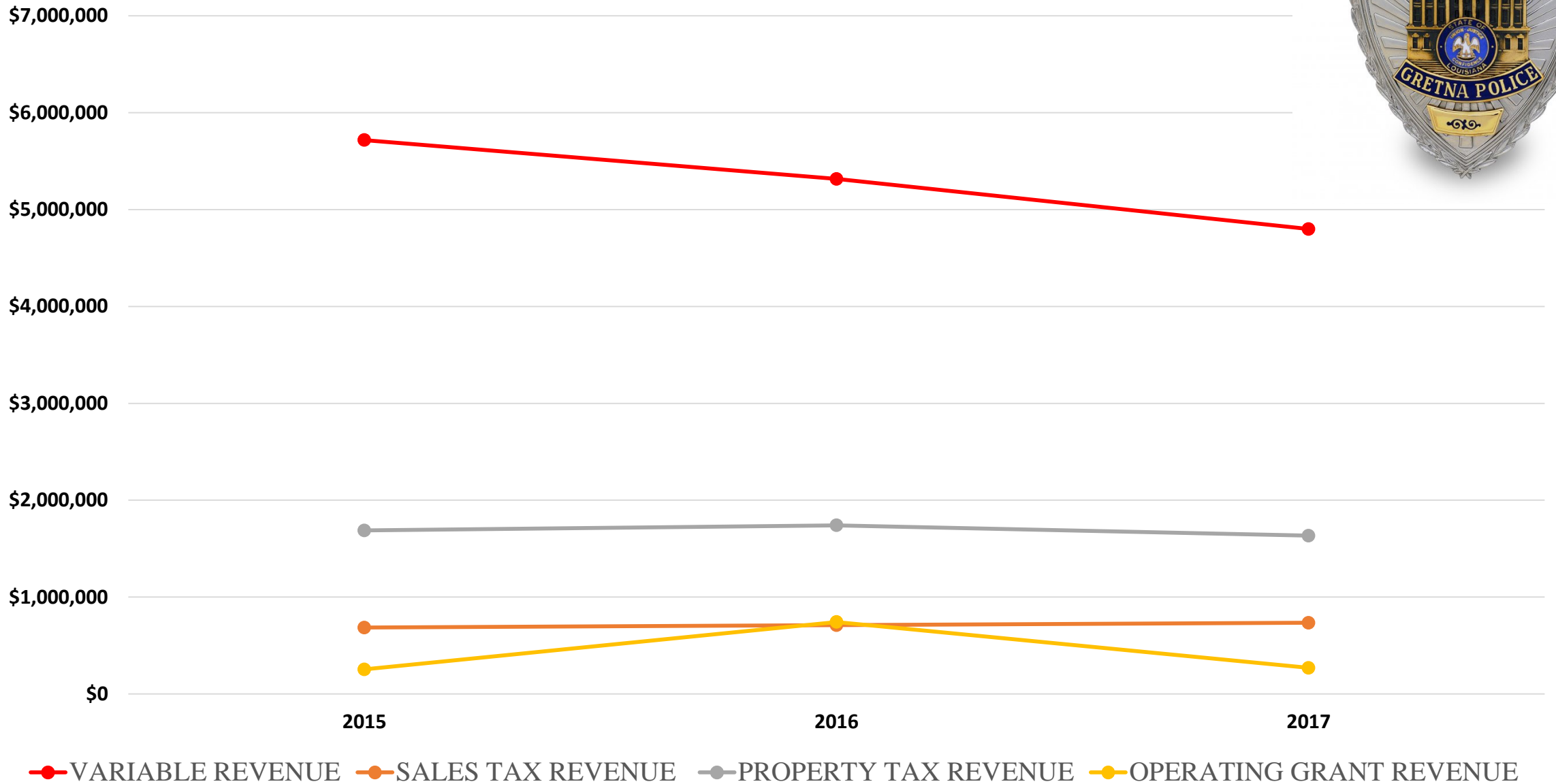


MILLAGE RATES

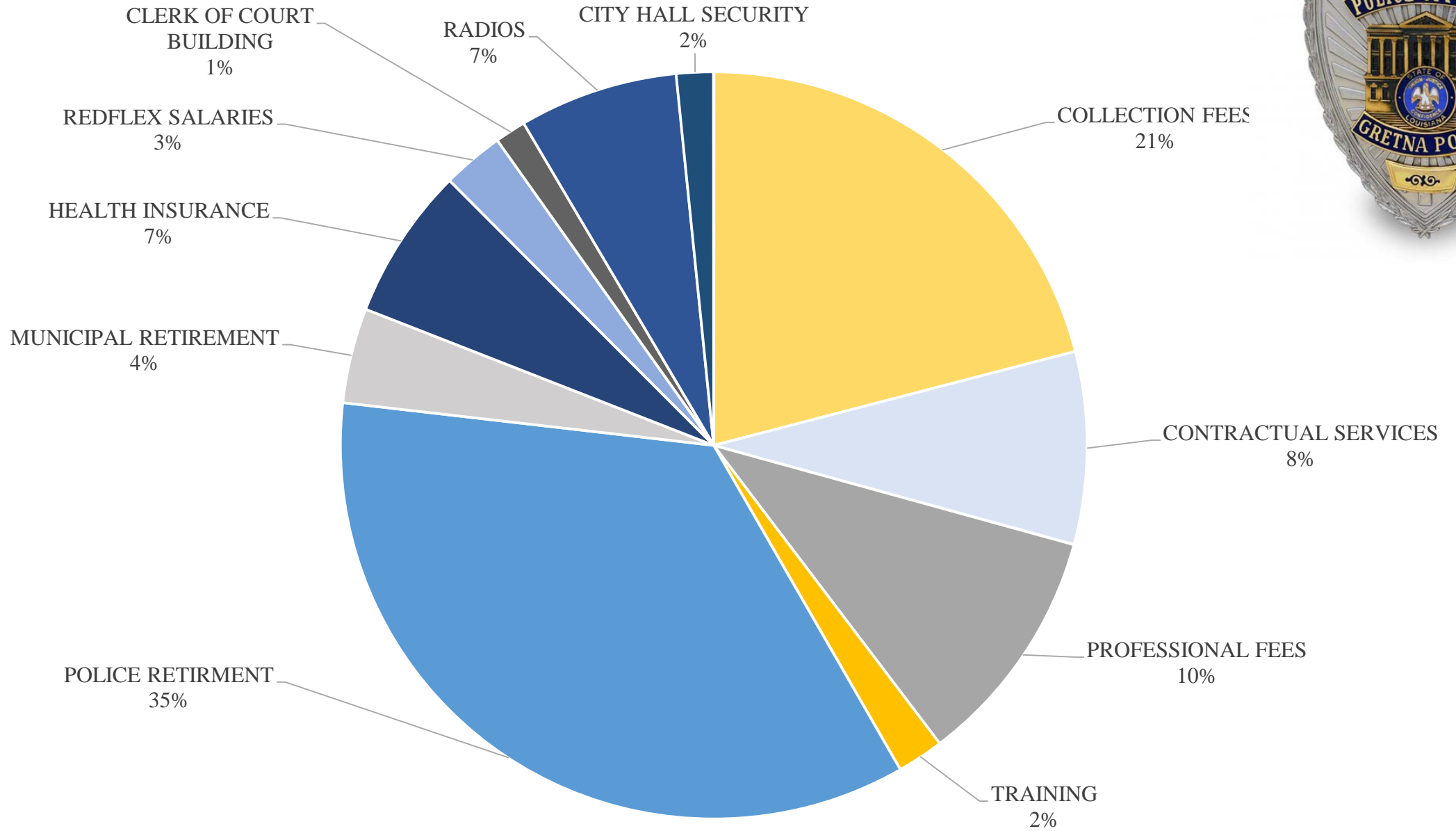
14 Year Lookback



POLICE REVENUE



REDFLEX EXPENDITURES 2018





ANNUAL INVESTMENT IN AN ENTRY LEVEL OFFICER

\$87,401

- Starting salary \$34,188
- Benefits \$19,909
- Basic Academy Training estimated initial investment \$12,000
- Basic issued uniform \$976
- Body armor \$803
- Radio \$4,014
- Weapon & holster \$1,658
- Annual cost for a police car \$8,853
- Yearly local and state mandated in-service training \$5,000

A SIGNIFICANT MONETARY INVESTMENT IS LOST WHEN AN OFFICER LEAVES THE DEPARTMENT

WE CAN NO LONGER AFFORD TO LOSE PERSONNEL

RECRUITMENT & RETENTION



- ❖ 25 Officers exited the Gretna Police Department during the Fiscal Years of 2014-2015, 2015-2016, and 2016-2017
- ❖ These officers had 145 years of cumulative experience which equates to an average of 5.8 years per officer.
- ❖ These officers exited GPD for jobs at the State Police, New Orleans Police Department, Tulane University, Plaquemines Parish Sheriff's Office, Westwego Police Department, Jefferson Parish Sheriff's Office, and St. Tammany Sheriff's Office.
- ❖ Several officers have given notice this Fiscal Year that they are seeking employment with the State Police
- ❖ The average years of experience of a patrol officer is less than 3 years

SERVICES PROVIDED

A TOTAL OF 26,525 CALLS FOR SERVICE (9-1-1) WERE RECEIVED BY GRETNA POLICE DISPATCH IN 2017

THAT IS AN AVERAGE OF 72 CALLS PER DAY

THESE CALLS CAN RANGE FROM

- Barking dogs
- Lost property
- Shoplifting
- Burglary
- Personal violence
- Stolen vehicles
- Identity theft
- Auto accidents



EMERGENCY PREPAREDNESS

PRE-KATRINA VS. POST-KATRINA EQUIPMENT

PRIOR TO KATRINA, EQUIPMENT WAS RENTED OR BORROWED

POST KATRINA EQUIPMENT WAS PURCHASED IN A EFFORT TO PROVIDE EFFICIENT AND EFFECTIVE SERVICES IN PREPERATION AND AS THE EMERGENCY EVENT OCCURES. SUCH EMERGENCY EQUIPMENT INCLUDES

- Generators
- Light Plants
- High water vehicles
- Boats
- Refrigerated trucks
- Storage trucks
- Gas trucks
- Water trucks
- Safe housing for personnel
- Incident Command Center

EMERGENCY PREPAREDNESS WAS BUDGETED IN PRIOR YEARS ON AVERAGE AT \$50,000. THIS IS NO LONGER POSSIBLE

