

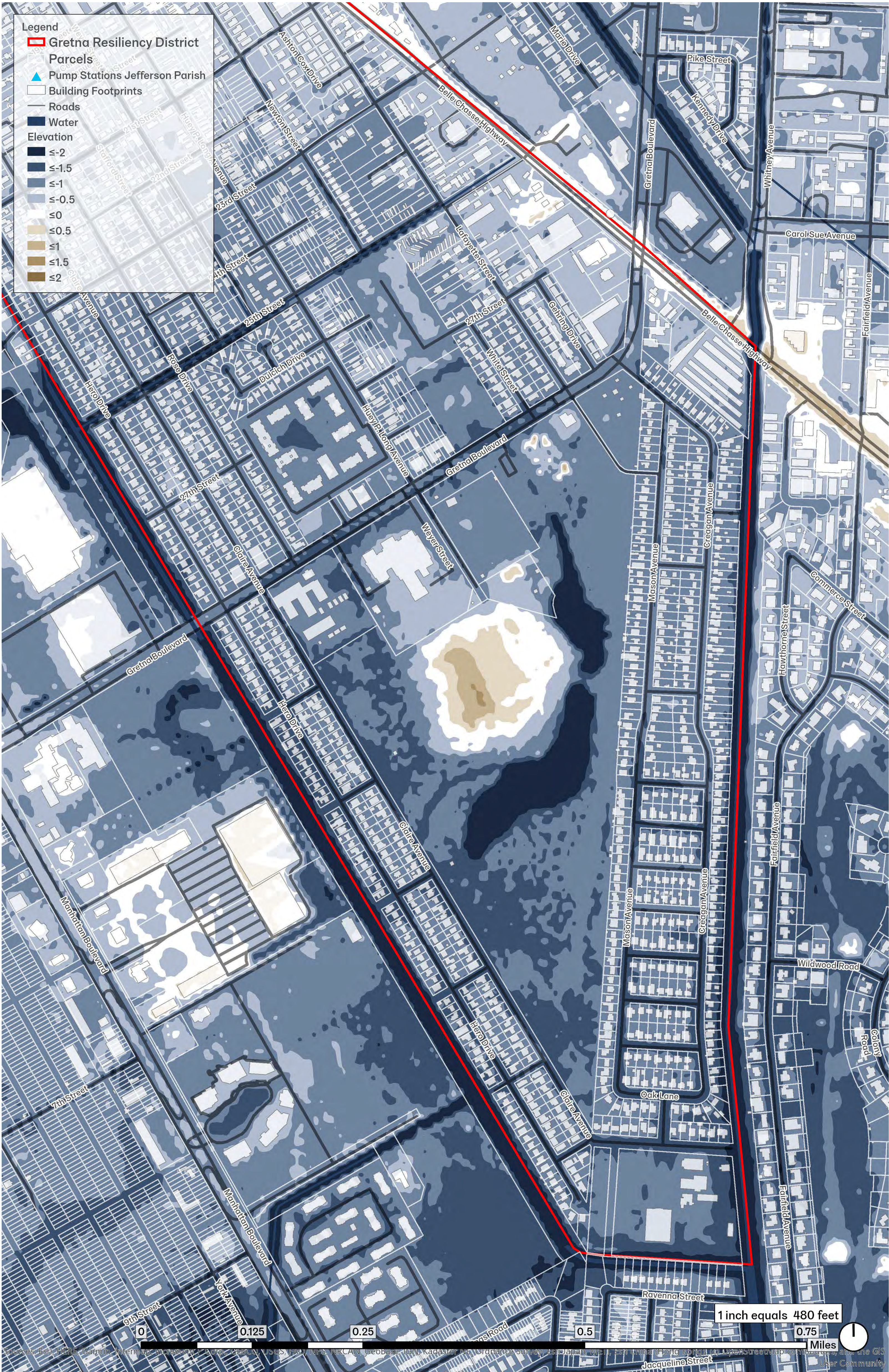
GREटना RESILIENCE DISTRICT

GREटना CITY PARK IMPROVEMENTS



PROJECT CONTEXT

PART OF A BROADER CONVERSATION



CITY OF GREटना LIMITS

LOUISIANA STRATEGIC ADAPTATIONS FOR FUTURE ENVIRONMENTS (LASAFE)

In April 2018, the City of Greटना was awarded \$5 million from the State of Louisiana Office of Community Development (OCD) to make flood mitigation, ecological, and recreational improvements to the park in alignment with the Greटना Resiliency District vision. This vision, and the concept for the park, were developed through the Louisiana Strategic Adaptations for Future Environments (LASAFE) planning process, a U.S. Department of Housing & Urban Development (HUD)-funded effort to increase community resilience.



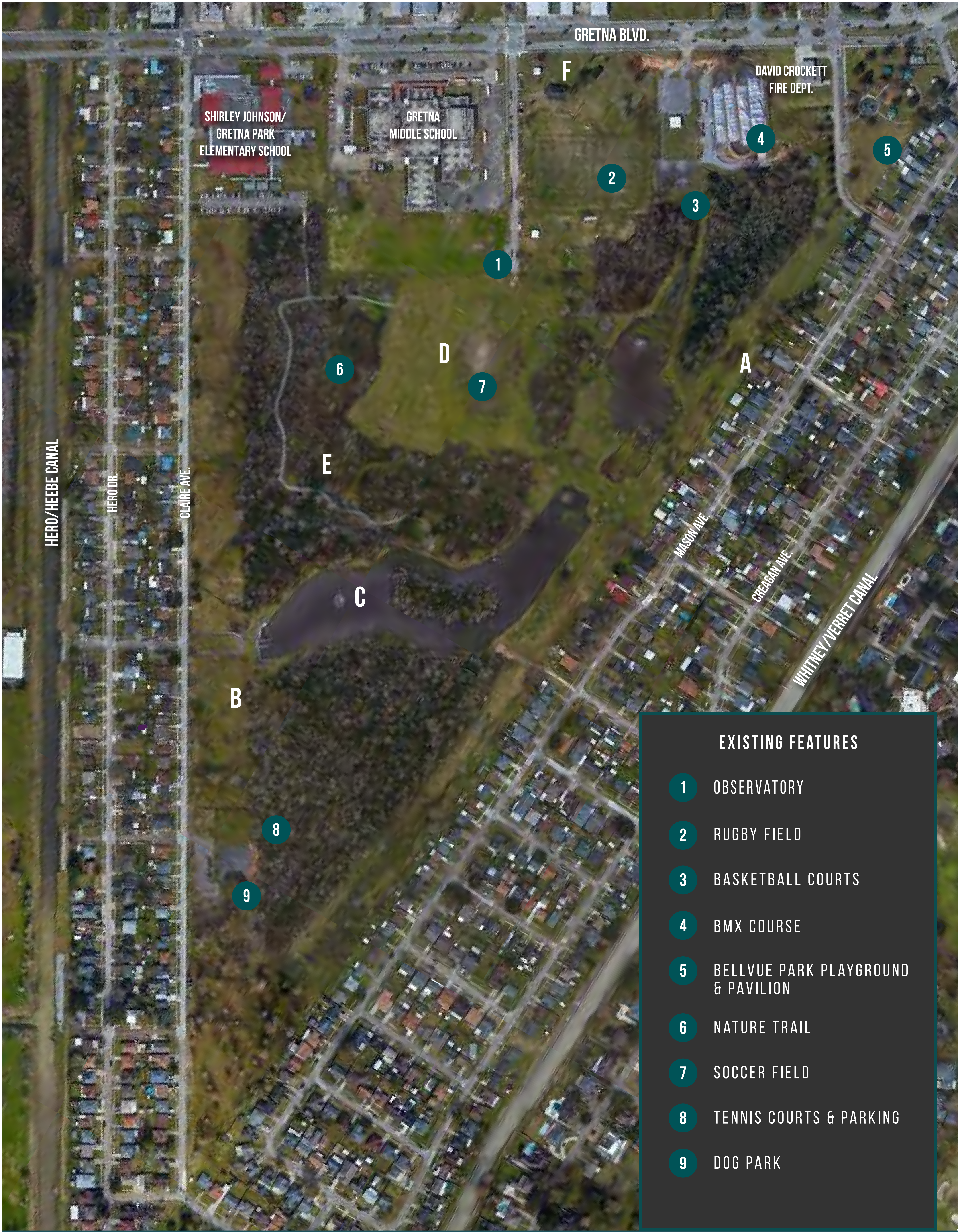
GRETNA RESILIENCE DISTRICT

GRETNA CITY PARK IMPROVEMENTS



EXISTING CONDITIONS

WHAT THE PARK ALREADY OFFERS



- EXISTING FEATURES**
- 1 OBSERVATORY
 - 2 RUGBY FIELD
 - 3 BASKETBALL COURTS
 - 4 BMX COURSE
 - 5 BELLVUE PARK PLAYGROUND & PAVILION
 - 6 NATURE TRAIL
 - 7 SOCCER FIELD
 - 8 TENNIS COURTS & PARKING
 - 9 DOG PARK



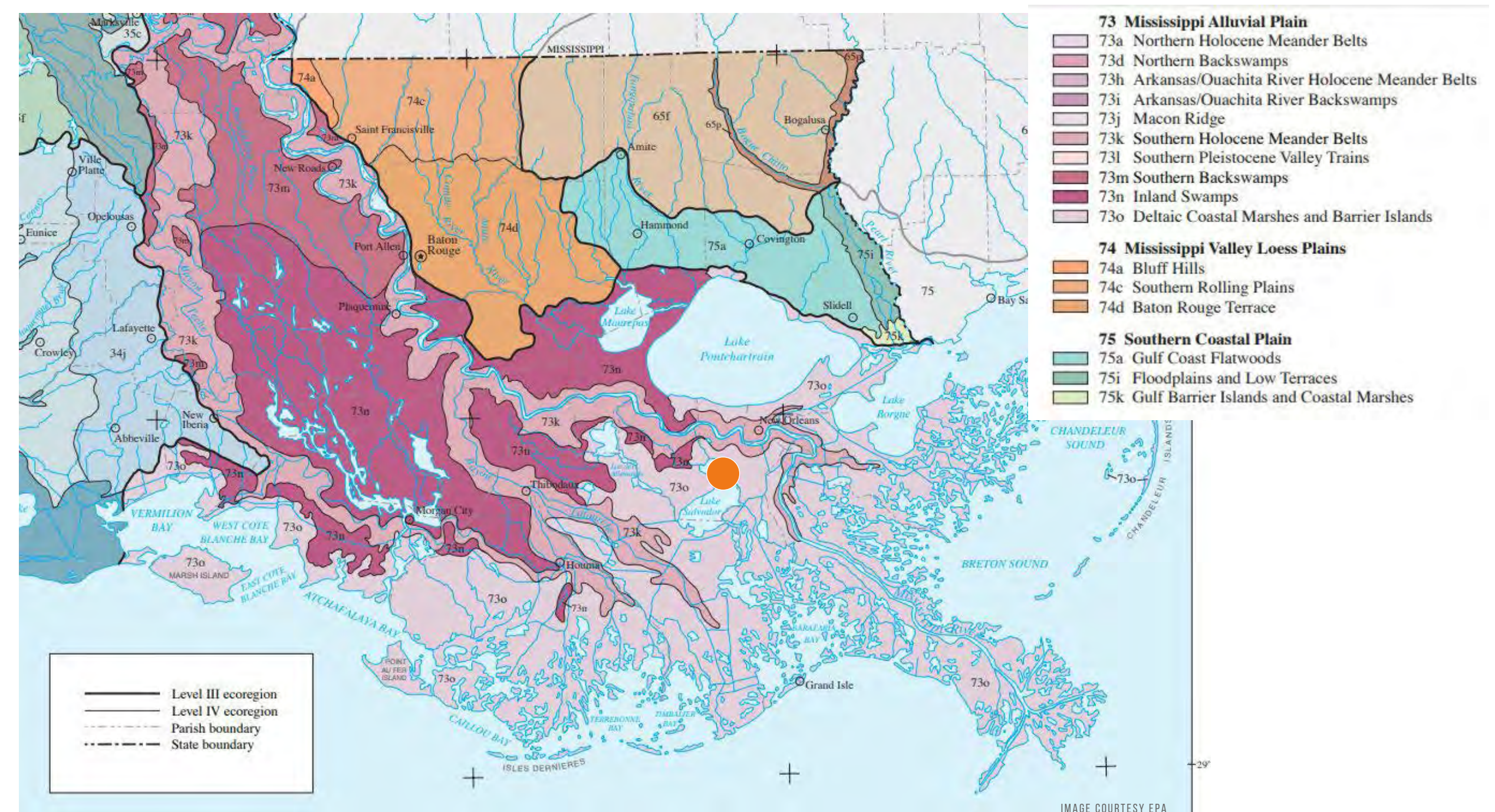
The figure consists of three maps of the lower Mississippi River region, arranged horizontally. Each map shows the river's course and surrounding geographical features, with an orange dot marking a specific location. The first map on the left is a 1826 Collet map, showing the river's course from the Gulf of Mexico up to the mouth of the Red River. It includes labels for 'Part of Lake Pontchartrain', 'LA ORLEANS', 'LA HACARINA', and 'GULF OF MEXICO'. The middle map is a 1858 Persac map, showing the river's course from the Gulf of Mexico up to the mouth of the Red River. It includes labels for 'LA ORLEANS', 'LA HACARINA', and 'GULF OF MEXICO'. The third map on the right is a 1891 Appleton map, showing the river's course from the Gulf of Mexico up to the mouth of the Red River. It includes labels for 'LA ORLEANS', 'LA HACARINA', and 'GULF OF MEXICO'. Each map has an orange dot marking a specific location, which is the site of the 1858 steamship collision.

1826 COLLET MAP OF THE COURSE OF THE MISSISSIPPI (LOC)

1858 PERSAC, NORMAN'S CHART OF THE LOWER MISSISSIPPI RIVER (LOC)

1891 APPLETON MAP OF NEW ORLEANS (LOC)

THE 1891 APPLETON MAP OF NEW ORLEANS SHOWS SEVERAL NEW CANALS. THE SITE AREA IS STILL DEMARCATED AS WETLANDS AND THERE IS A BAYOU RUNNING THROUGH THE SITE.

[illegible]

LAKE PONTCHARTRAIN IBA

NEW

Bayou Sauvage NWF

LAKE BORGNE

LA EAST DELTA PLAIN IBA

New Orleans

Chalmette

Gretna

GRETTA CITY PARK

Westwego

Waggonian

Kenner

BARATARIA TERREBONNE IBA

LAKE SALVADOR

BARATARIA TERREBONNE IBA

LA EAST DELTA PLAIN IBA

KEY BIODIVERSITY AREAS

NATIONAL PARK/SCENIC RIVER

STATE PARK

NATIONAL WILDLIFE REFUGE

GRAPHIC BY SUZANNE TURNER ASSOCIATES. SOURCES: AUDUBON, FWS, HERE, CARWIN, NOAA, NPS, USFWS

	Wire grass (<i>Spartina patens</i>)		Belted sedges (<i>Rhyssopogon</i> spp.)		Switch grass (<i>Panicum virgatum</i>)
	Big bluestem (<i>Andropogon gerardii</i>)		Caric sedges (<i>Carex</i> spp.)		Low grass (Lewy grass spp.)
	Little bluestem (<i>Schizachyrium scoparium</i>)		Purpletop (<i>Sporobolus</i> spp.)		Purpletop (<i>Sporobolus</i> spp.)
	Indian grass (<i>Sorghastrum nutans</i>)		Nur rushes (<i>Scleria</i> spp.)		Umbrella sedge (<i>Umbrella sedge</i>)
	Bromisedes pabulum (<i>Paspalum plicatulum</i>)		Three-awn grass (<i>Panicum</i> spp.)		Three-awn grass (<i>Panicum</i> spp.)

COMMON HERBACEOUS SPECIES

Hackberry
(*Cornus alba*)

Green ash
(*Fraxinus pennsylvanica*)

Bald cypress
(*Taxodium distichum*)

Water oak
(*Quercus nigra*)

Sweetgum
(*Liquidambar styraciflua*)

Water locust
(*Geodalia aquatica*)

Sycamore
(*Platanus occidentalis*)

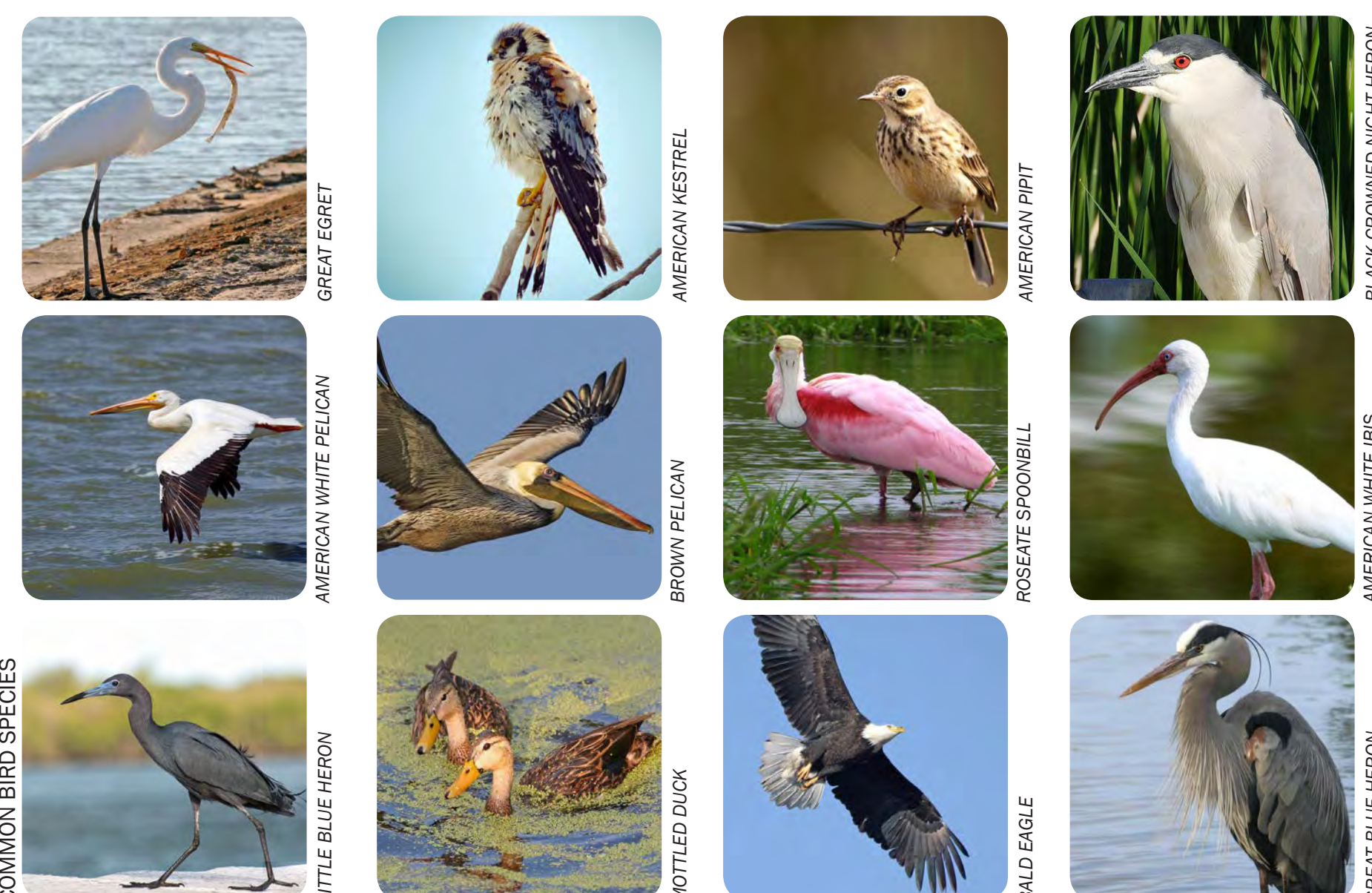
Water hickory
(*Carya aquatica*)

American elm
(*Ulmus americana*)

Red maple
(*Acer rubrum*)

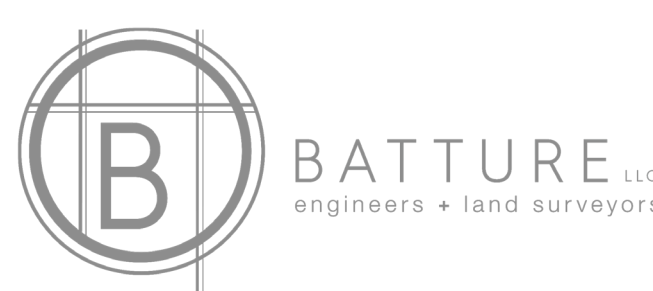
Virtail oak
(*Quercus nuttallii*)

THERE ARE SEVERAL TYPES OF UPLAND LAKES, INCLUDING THOSE ASSOCIATED WITH STREAM SYSTEMS, IN LOUISIANA BASED ON ORIGIN. BAYOU CONVIENT ONCE FLOWED THROUGH THE SITE, AND AS THE LAND WAS DRAINED AND CHANNELIZED, THE TWO LAKES WERE WHAT WAS LEFT BEHIND.



The image is a composite of six photographs arranged in a 2x3 grid, illustrating different types of invasive species. The top-left photo shows a hand holding three large, dark, spiral-shaped snail shells. The top-right photo shows a dense patch of tall, thin grass with alternating green and reddish-brown blades. The bottom-left photo shows a cluster of bright red, oval-shaped egg masses attached to a tree branch. The bottom-right photo shows the green, heart-shaped leaves of a tree with small, light-colored flowers or fruits.

WAGGONNER
& BALL C A R B O LANDSCAPE
ARCHITECTURE



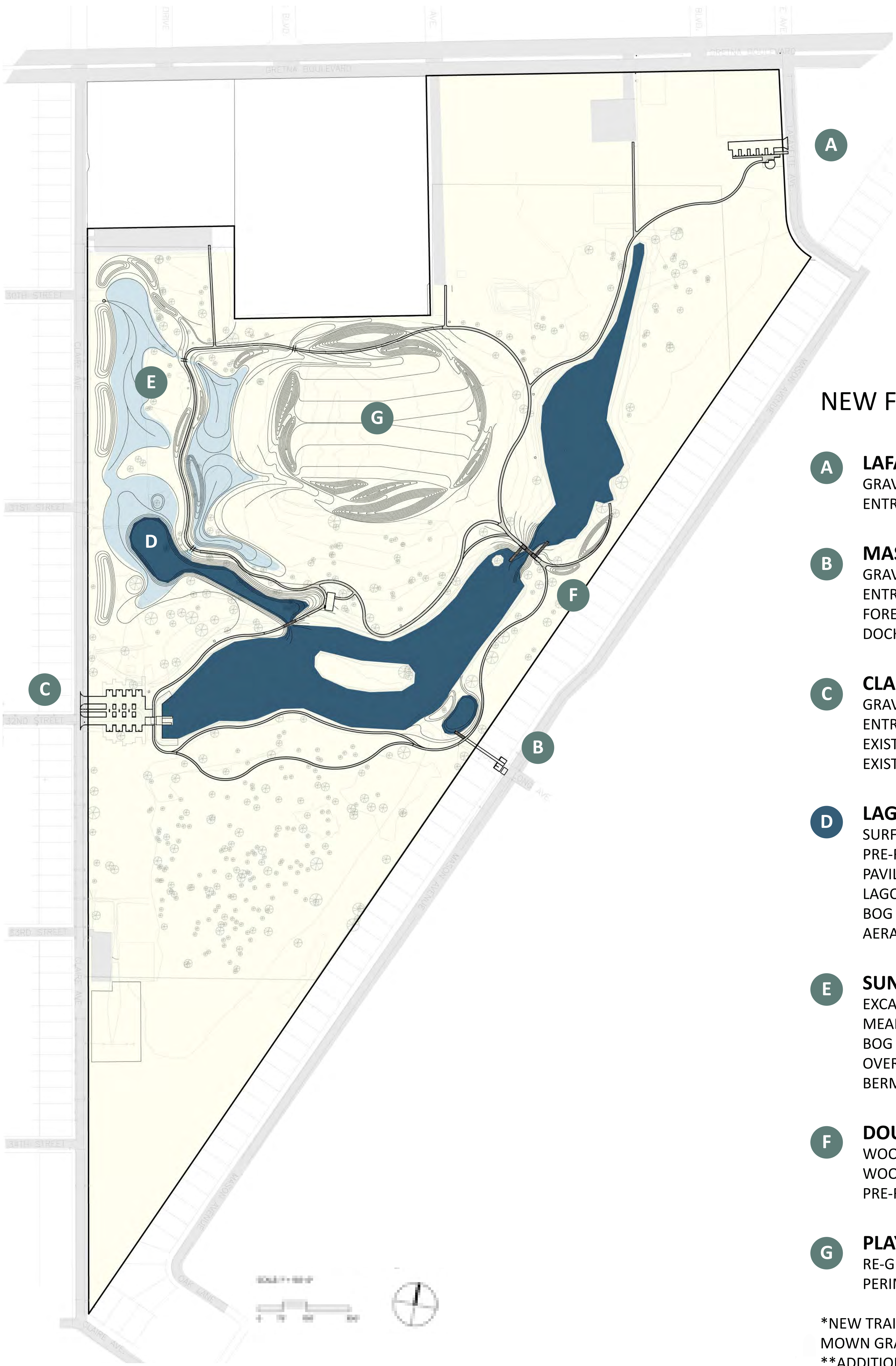
BATTURE LLC
engineers + land surveyors

GRETNA RESILIENCE DISTRICT

GRETNA CITY PARK IMPROVEMENTS



DESIGN OVERVIEW



NEW FEATURES OVERVIEW

- A LAFAYETTE ENTRANCE**
GRAVEL PARKING (10 SPACES)
ENTRY SIGNAGE & GRAVEL COURT (CAR+PEDESTRIAN)
- B MASON ENTRANCE**
GRAVEL PARKING (2 SPACES)
ENTRY SIGNAGE & GRAVEL COURT (CAR+PEDESTRIAN)
FOREBAY+DRAIN INLET RETROFIT
DOCK
- C CLAIRE ENTRANCE**
GRAVEL PARKING (28 SPACES)
ENTRY SIGNAGE & GRAVEL COURT (CAR+PEDESTRIAN)
EXISTING WEIR STRUCTURE RETROFITS (DECKING+SHADE)
EXISTING CONC. APRON RETROFITS (RAILING+PAINT)
- D LAGOON**
SURFACE WATER EXTENSION (EXCAVATION)
PRE-FABRICATED STEEL BRIDGE (40'-0" SPAN)
PAVILION
LAGOON WEIR
BOG GARDEN (EXTENDS TO MEADOW WEIR)
AERATOR PUMP & DIFFUSER NETWORK
- E SUNKEN MEADOW**
EXCAVATED MEADOW (DRY DETENTION BASIN)
MEADOW WEIR
BOG GARDEN (EXTENDS TO LAGOON WEIR)
OVERFLOW DRAIN
BERMS
- F DOUBLE DOCKS**
WOOD DOCK
WOOD DOCK WITH SHADE STRUCTURE
PRE-FABRICATED STEEL BRIDGE (24'-0" SPAN)
- G PLAYING FIELDS**
RE-GRADING
PERIMETER BERMS (EXCAVATED MEADOW/LAGOON MATERIAL)

*NEW TRAIL NETWORK THROUGHOUT PARK (GRAVEL, MULCH, AND MOWN GRASS).
**ADDITIONAL TRAIL & EDUCATIONAL SIGNAGE THROUGHOUT PARK.

GREटना RESILIENCE DISTRICT

GREटना CITY PARK IMPROVEMENTS



PARK WATER SYSTEM



PROPOSED NEW LAGOON, PATHS & STRUCTURES (TYPICAL CONDITION)



AFTER RAINFALL

GRETNA RESILIENCE DISTRICT

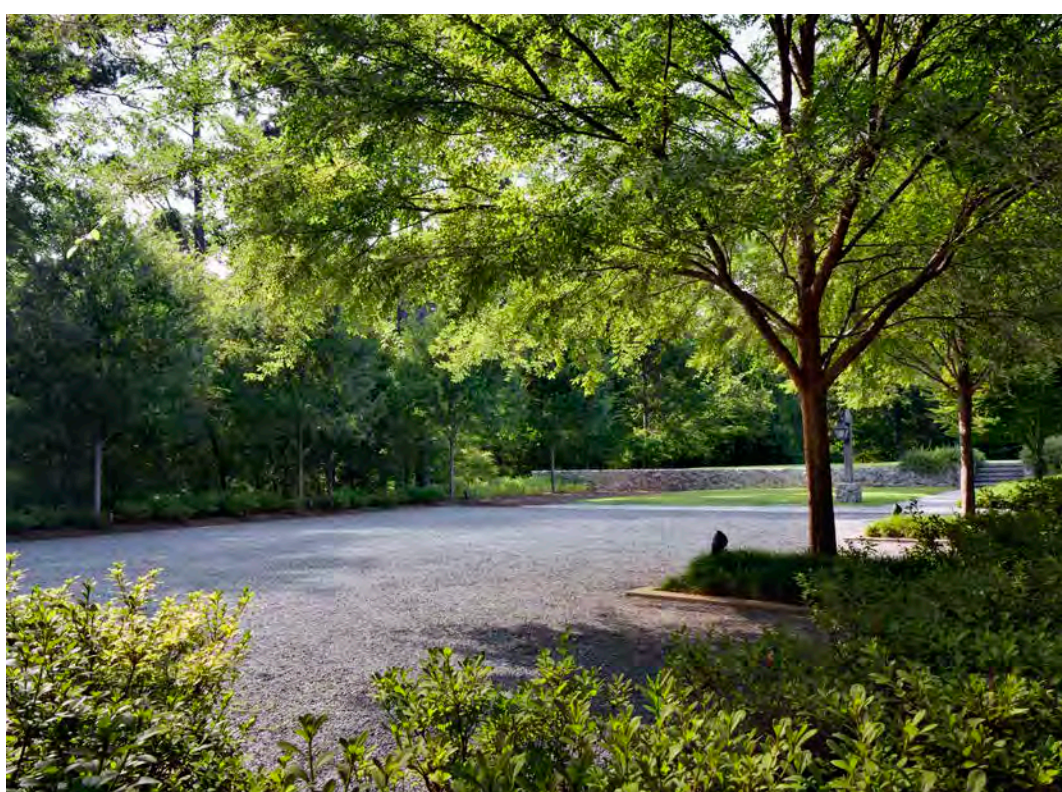
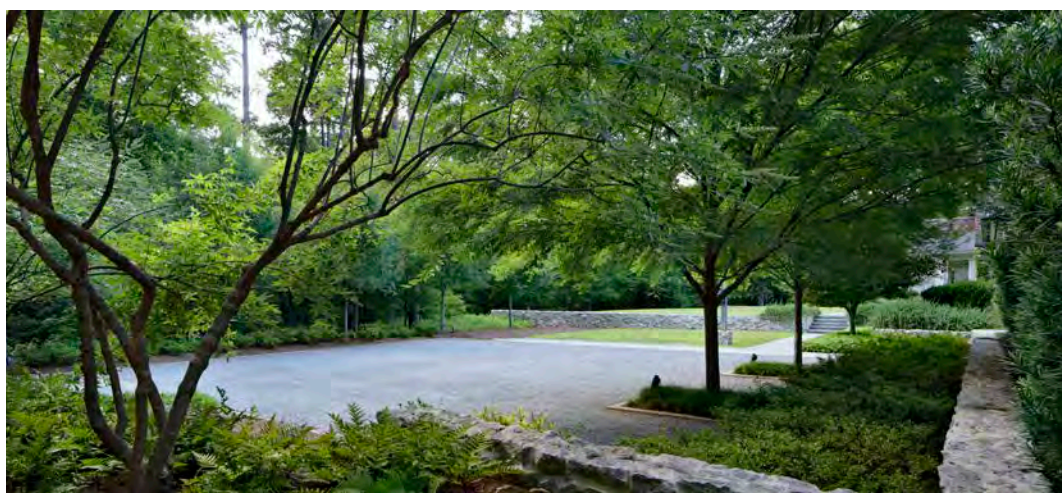
GRETNA CITY PARK IMPROVEMENTS



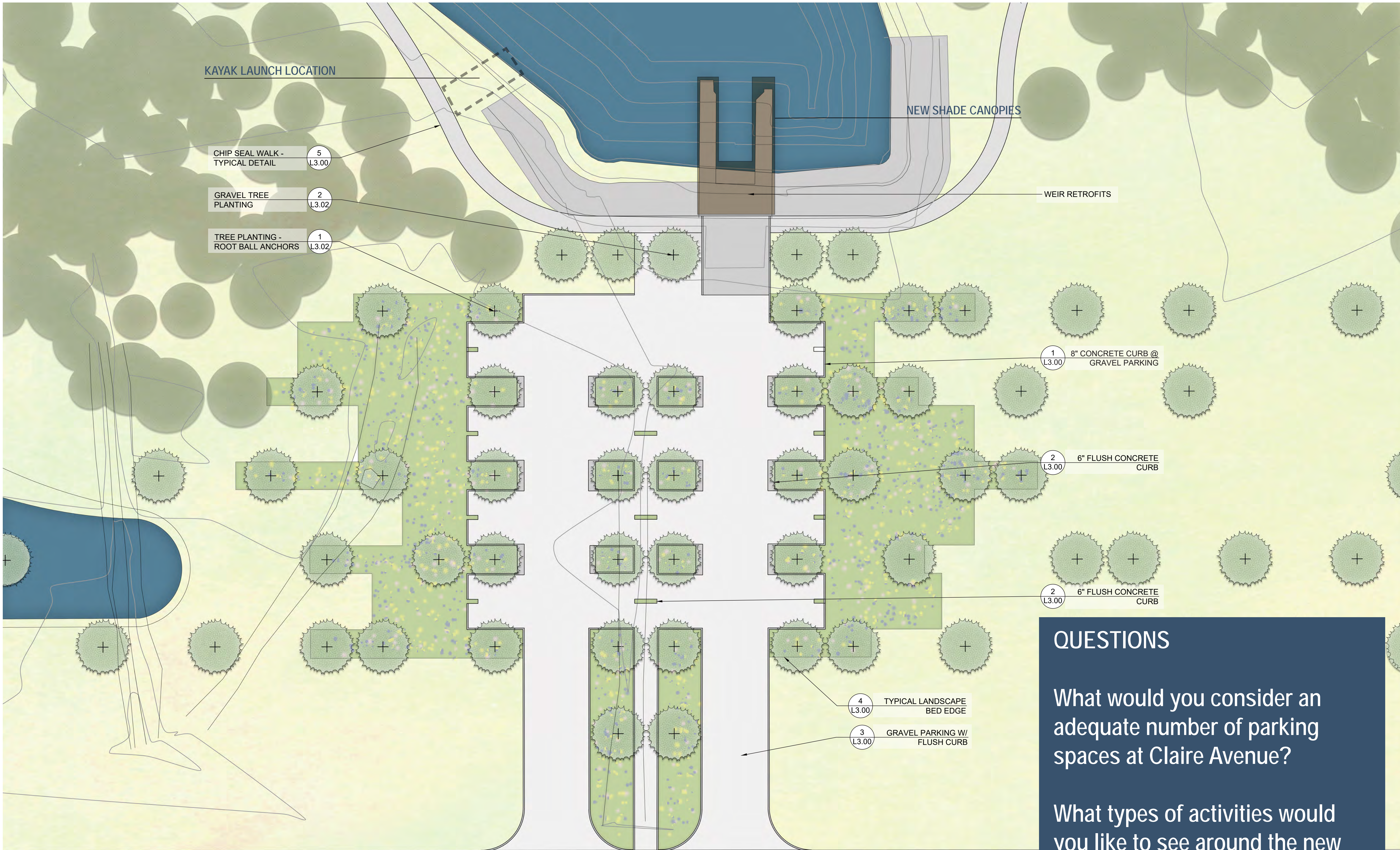
CLAIRE ENTRANCE



EXISTING CONDITIONS AT CLAIRE WEIR STRUCTURE



PRECEDENT GRAVEL PARKING AREA WITH SHADE TREES



NEW PARKING AT WEIR STRUCTURE

QUESTIONS

What would you consider an adequate number of parking spaces at Claire Avenue?

What types of activities would you like to see around the new shade canopies?

GRETNA RESILIENCE DISTRICT

GRETNA CITY PARK IMPROVEMENTS



CLAIRE ENTRANCE



PROPOSED SHADE CANOPIES OVER EXISTING WEIR STRUCTURE



"KAYAK VIEW"



SHADE CANOPY INSPIRATION & PRECEDENTS

GRETNA RESILIENCE DISTRICT

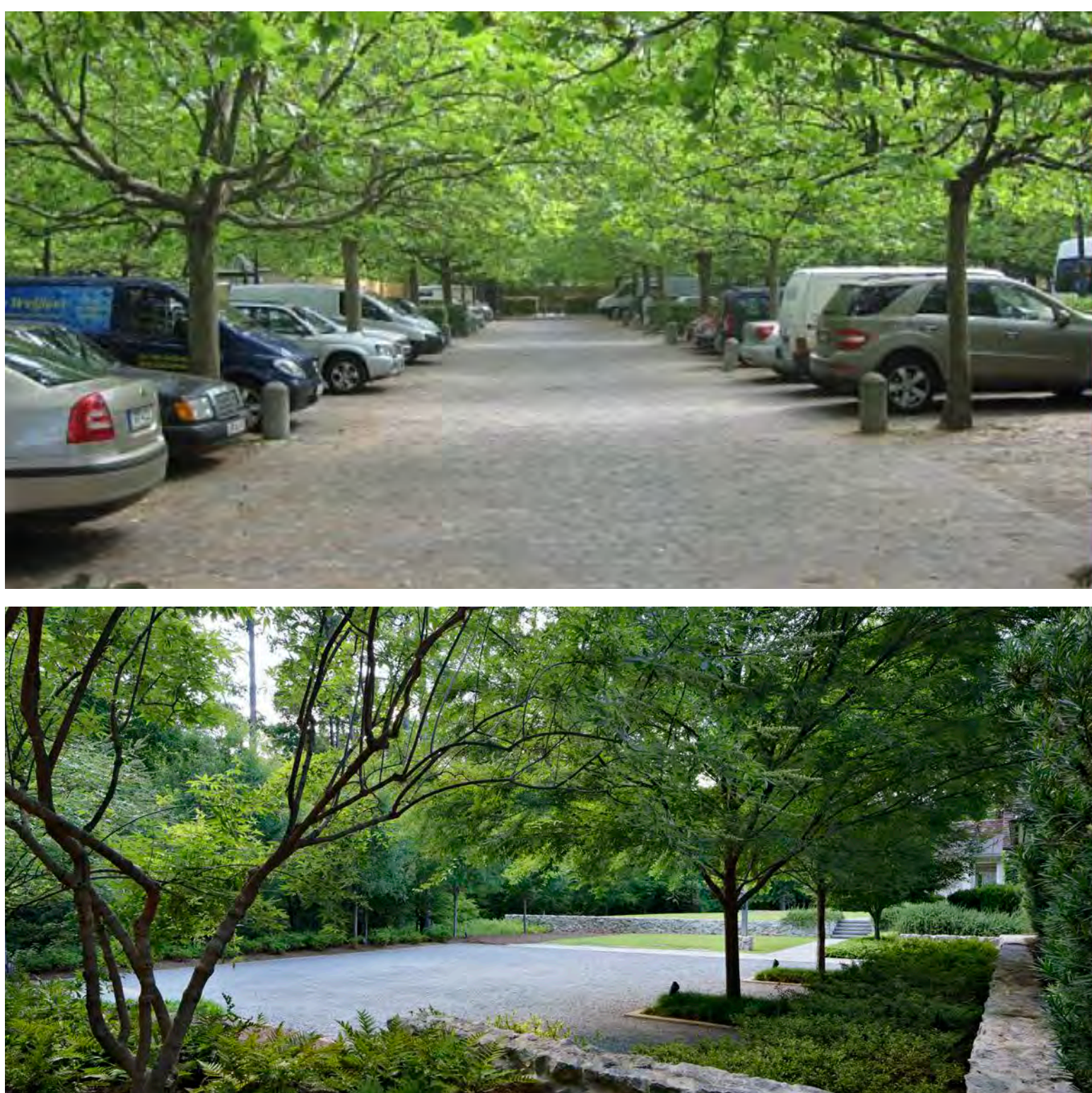
GRETNA CITY PARK IMPROVEMENTS



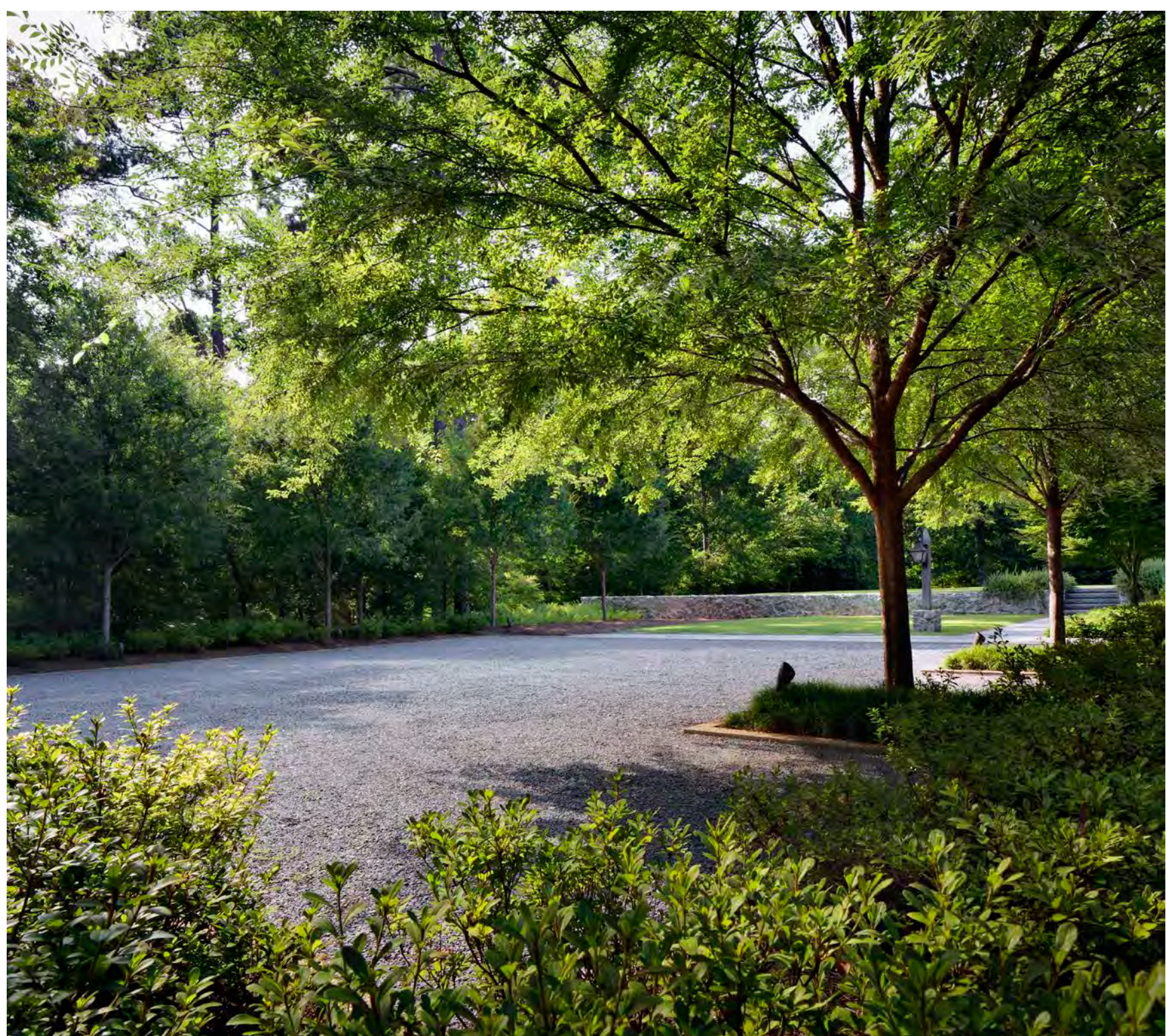
MASON ENTRANCE



EXISTING CONDITION AT MASON ENTRANCE



PRECEDENT GRAVEL PARKING AREA WITH SHADE TREES





LAFAYETTE ENTRANCE



EXISTING CONDITION AT BELLEVUE PARK



PRECEDENT GRAVEL PARKING AREA WITH SHADE TREES



QUESTIONS

What would you consider an adequate number of parking spaces along Lafayette Avenue?

Do you have ideas for naming new trails in the park?

GREटना RESILIENCE DISTRICT

GREटना CITY PARK IMPROVEMENTS



LAGOON & MEADOW



EXISTING PARK CONDITIONS

MATCHLINE SHEET L3.03



CLARBO LANDSCAPE ARCHITECTURE

SCALE: 1" = 50'-0"



PLANT SCHEDULE L5.01

TREES	QTY	COMMON NAME
	113	BALD CYPRESS
	14	COLUMNAR SWEET GUM
	29	WATER TUPELO
SHRUBS	QTY	COMMON NAME
	240	DWARF PALMETTO
SHRUB AREAS	QTY	COMMON NAME
	769	SOUTHERN SHIELD FERN
GROUND COVERS	QTY	COMMON NAME
	191,746 SF	BERMUDA GRASS
	3,334	CUSTOM AQUATIC MIX
	86,807 SF	CUSTOM MEADOW MIX
	174,478 SF	CUSTOM MEADOW MIX
	22,898	CUSTOM WOODLAND SHADE MIX
	TREES / FOREST	
	GRASS / GROUND COVER	
	MEADOW (SOMETIMES WET)	
	POND (ALWAYS WET)	

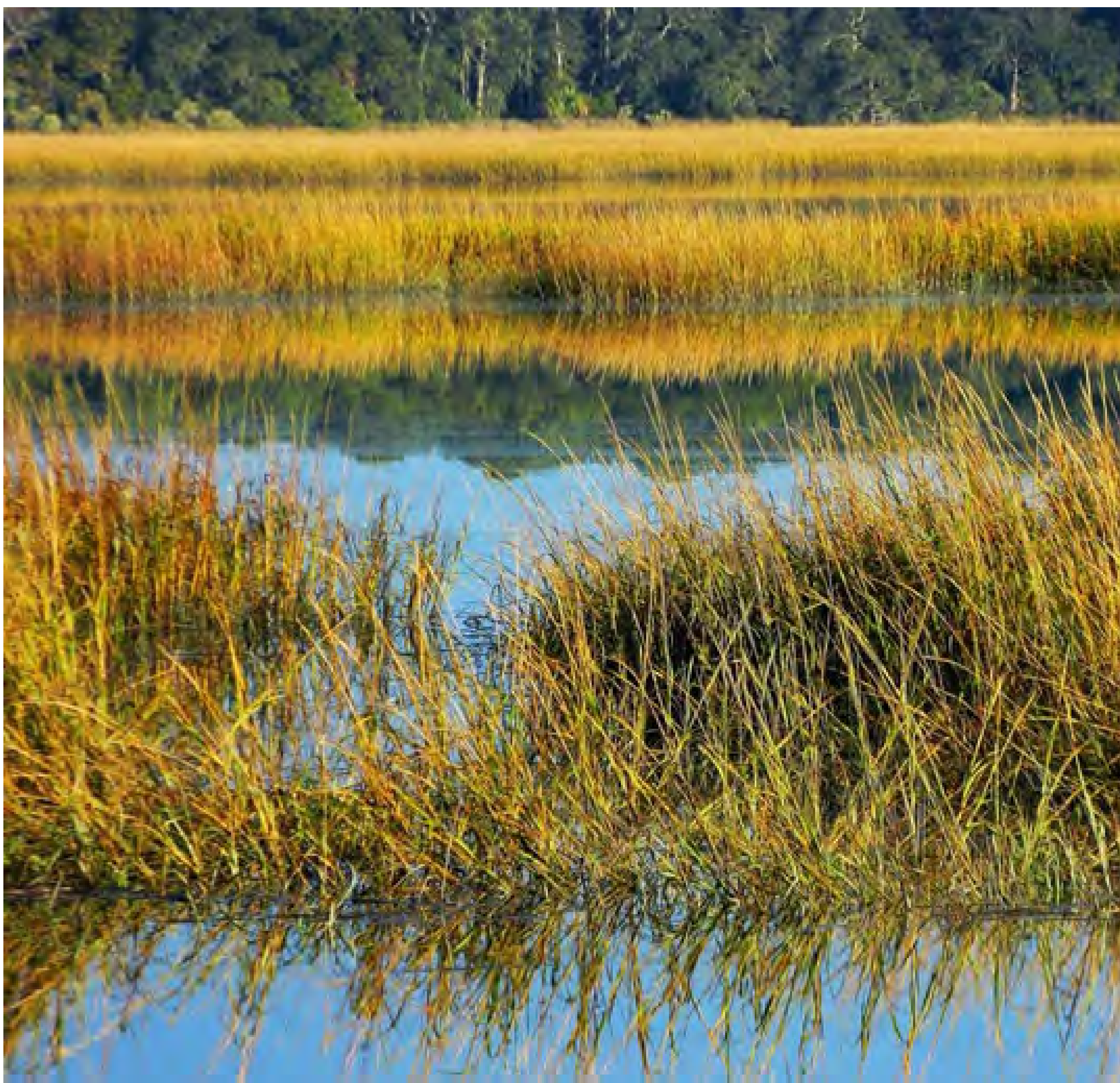
GREटना RESILIENCE DISTRICT

GREटना CITY PARK IMPROVEMENTS



LAGOON & MEADOW

LANDSCAPE EXAMPLES



MEADOW DRY CONDITION

MEADOW WET CONDITION



LAGOON PLANTING PRECEDENTS & SPATIAL CHARACTER

GREटना RESILIENCE DISTRICT

GREटना CITY PARK IMPROVEMENTS

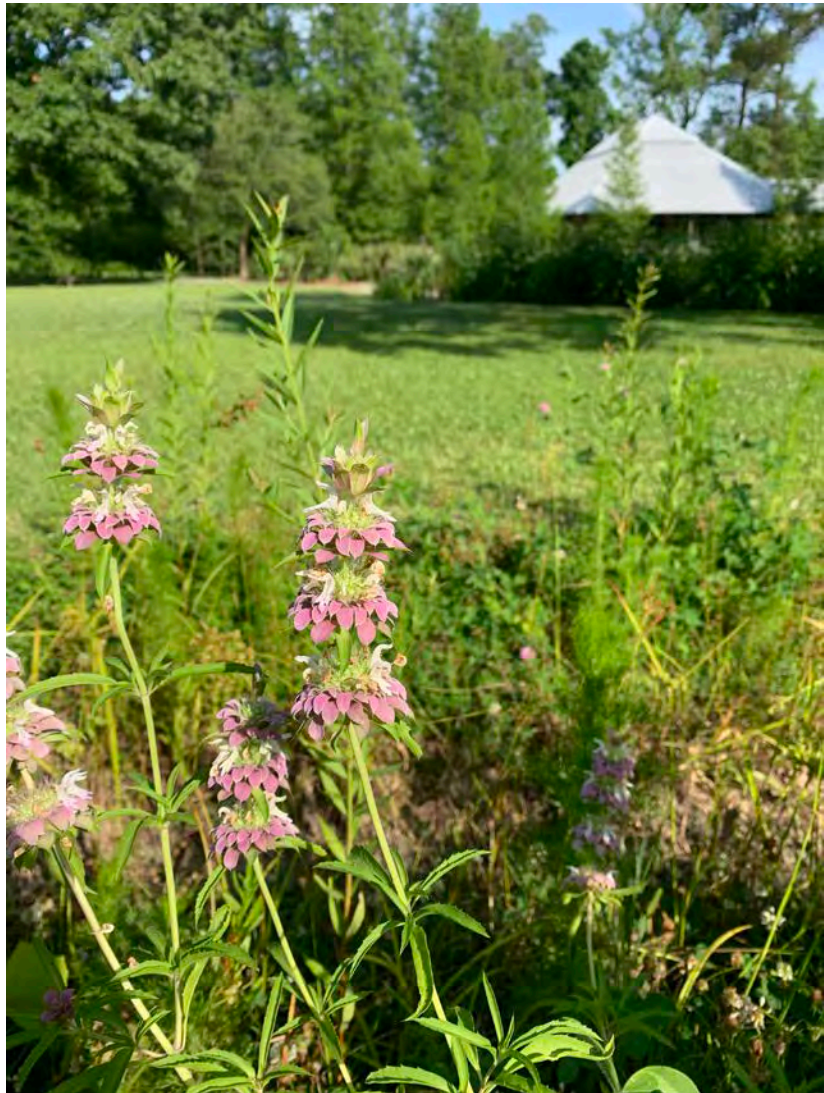


LAGOON & MEADOW

LANDSCAPE EXAMPLES



WET & DRY EDGE CONDITIONS



CHARACTERISTIC SPECIES

GREटना RESILIENCE DISTRICT

GREटना CITY PARK IMPROVEMENTS



PATH NETWORK



PATH BETWEEN BERMS



MOWN GRASS PATH



GRAVEL PATH & EDUCATIONAL SIGNAGE



MULCH PATH THROUGH FOREST



STEEL BRIDGES OVER PONDS



ELEVATED GRAVEL PATH AT LAGOON



MULCH PATH



PARK PAVILION



EXISTING CONDITION



PAVILION LANDSCAPE PRECEDENT PHOTOS



QUESTIONS

Are there activities you would like to see - or not - at the pavilion?

Do you have ideas for naming new trails or features in the park?

PAVILION SITE NEXT TO NEW LAGOON FACING BIRD ISLAND

GRETNA RESILIENCE DISTRICT

GRETNA CITY PARK IMPROVEMENTS



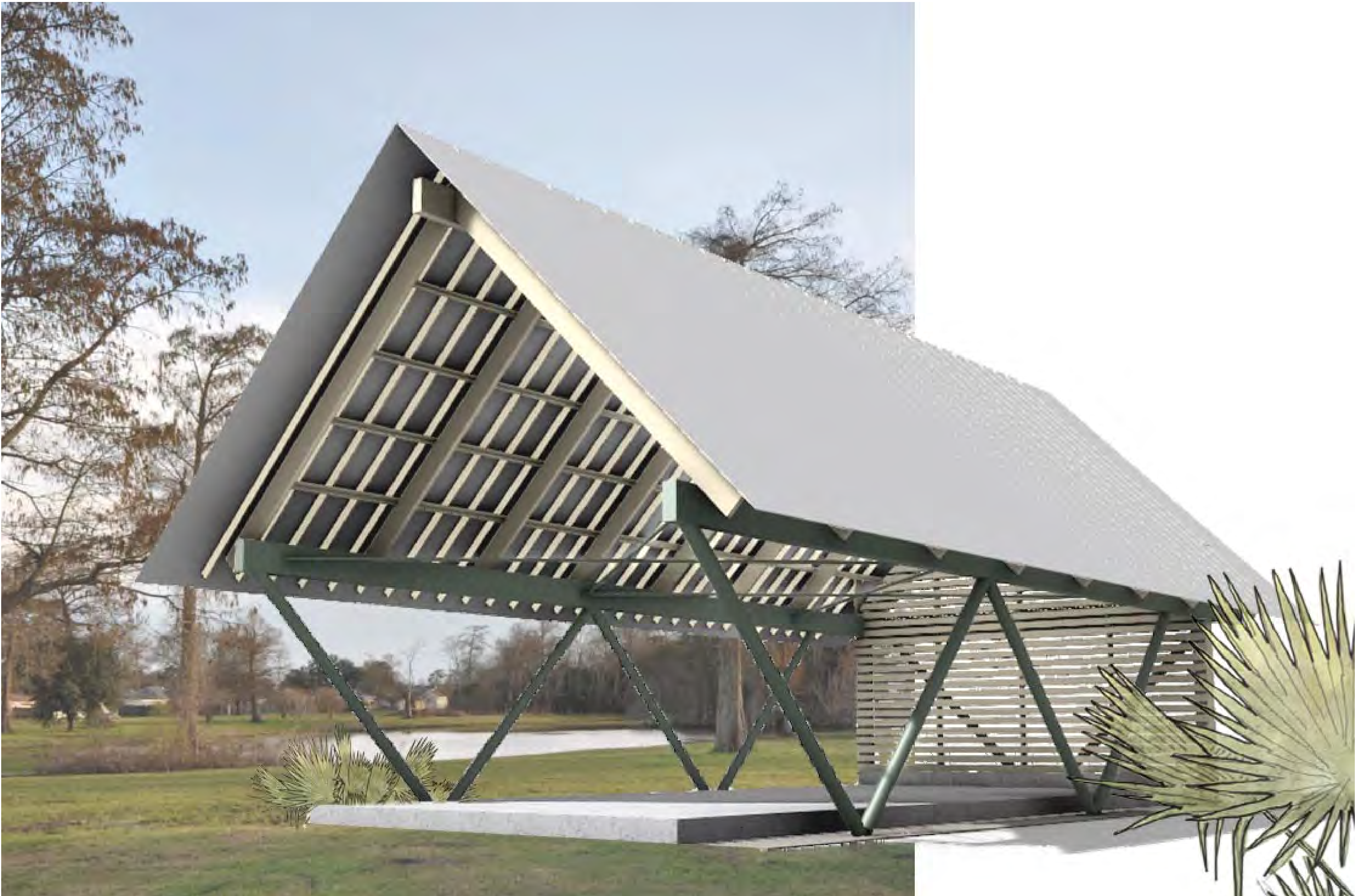
PARK PAVILION



VIEW FROM CLAIRE ENTRANCE



VIEW TOWARDS BIRD ISLAND



EXTERIOR VIEW



LANDSCAPE & SIGNAGE IDEAS



PAVILION INSPIRATION PHOTOS

GRETNA RESILIENCE DISTRICT

GRETNA CITY PARK IMPROVEMENTS



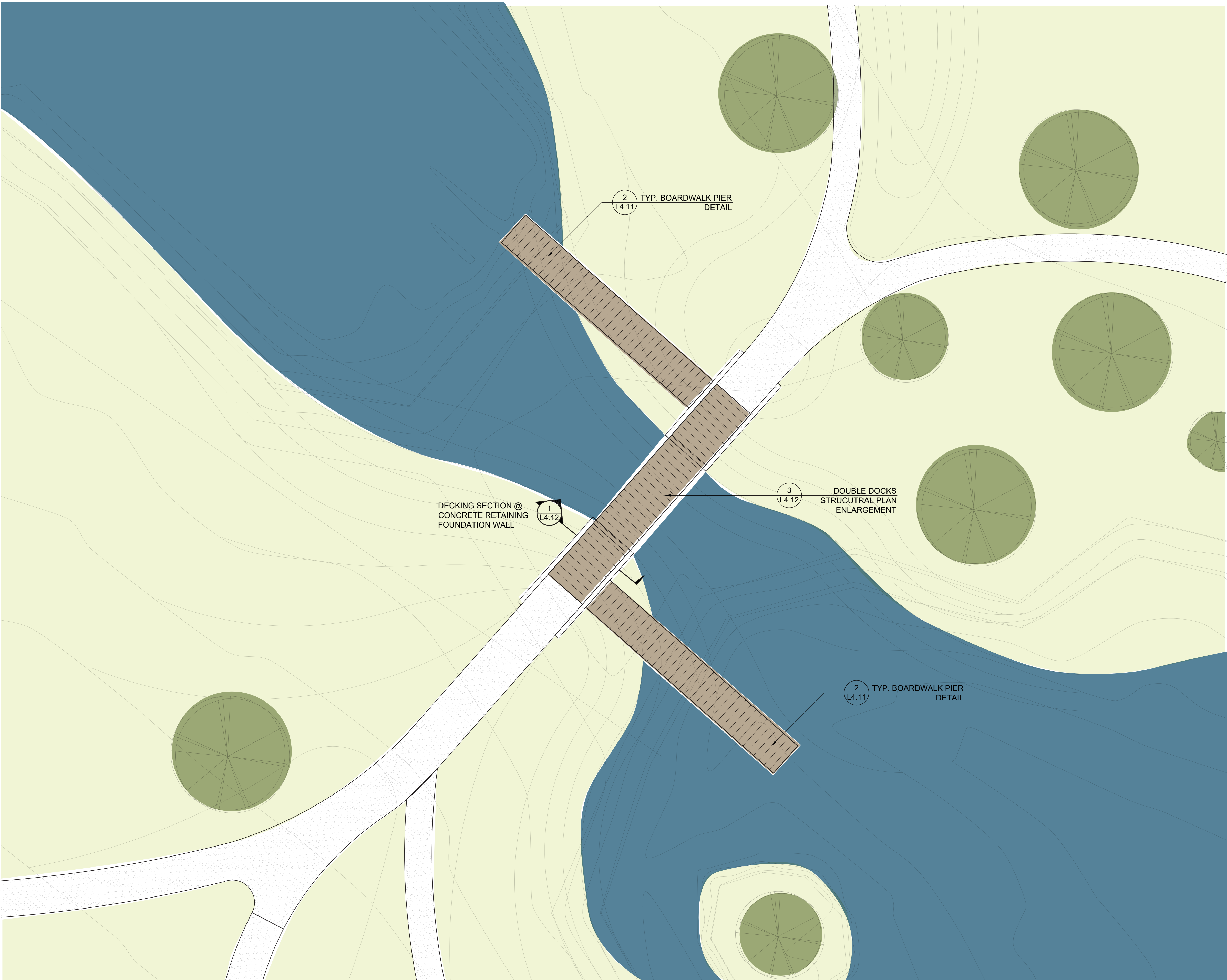
DOUBLE DOCKS



EXISTING LAND BRIDGE BETWEEN PONDS



PRECEDENT BRIDGE CROSSING



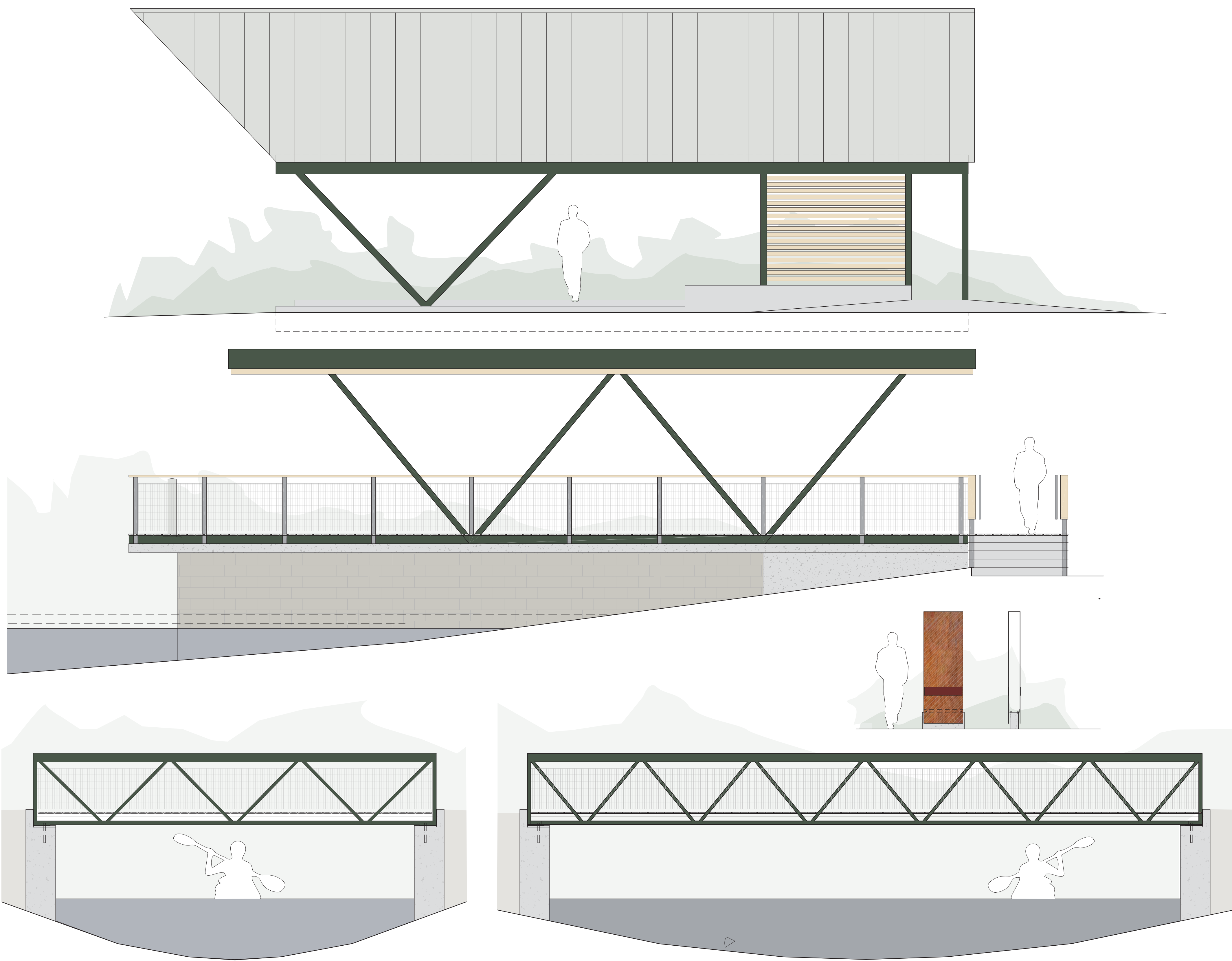
CARBO LANDSCAPE ARCHITECTURE

SCALE: 1" = 10'-0"

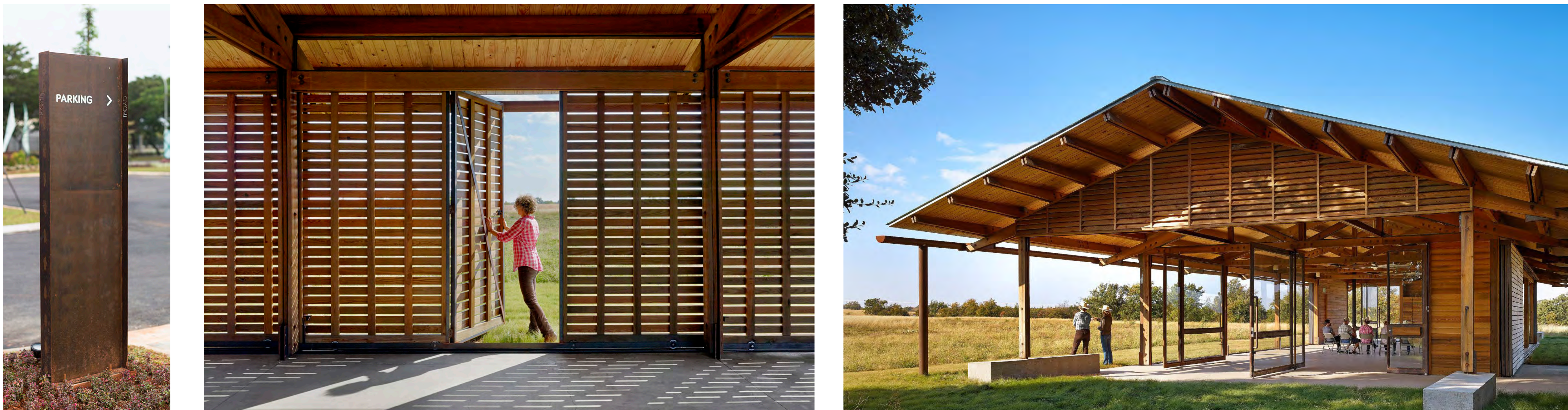
0 5' 10' 20'



MATERIALS & FINISHES



PROPOSED NEW PARK STRUCTURES



MATERIAL & FORM INSPIRATION



PROPOSED FENCING STANDARD FOR MASON STREET



EXISTING FENCE CONDITIONS

For all properties whose rear yard faces Gretna City Park: the City Council is considering adopting a standard that would require new fencing conditions for exposures that face Gretna City Park to conform to the standard illustrated below.

Conformance to this standard would only occur for fences that are being newly installed or if more than 50 percent of the exposure is being replaced. Residents would have the options to improve privacy with landscape screening.



Do you think this is an appropriate standard to improve the park and neighborhood?



EXAMPLES OF ENVISIONED FENCE CONDITIONS